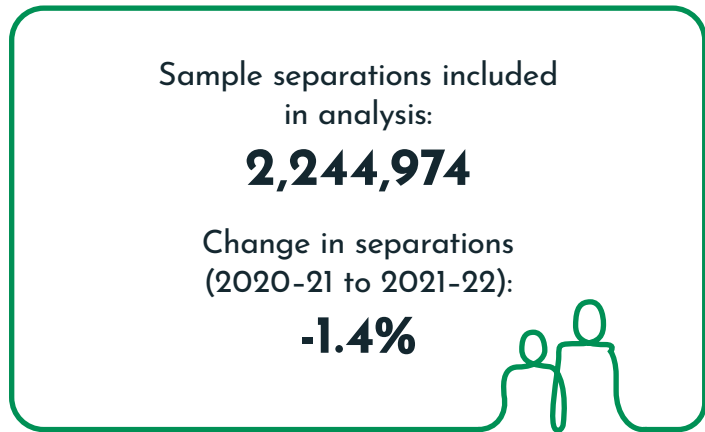
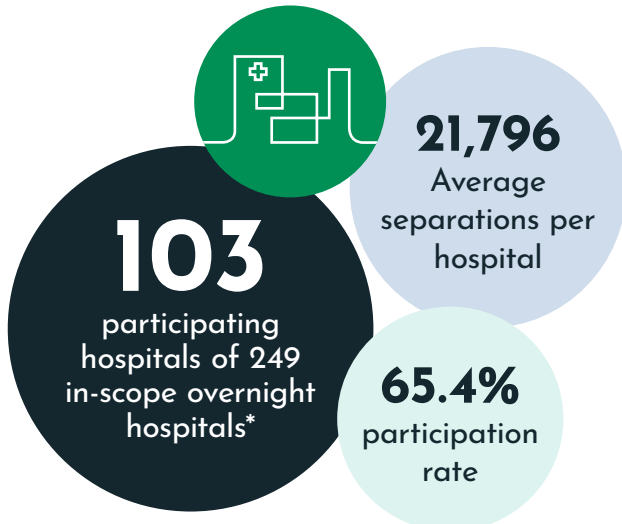


This National Hospital Cost Data Collection (NHCDC) collected private hospital cost information for the 2021-22 financial year. It is important to note that the coronavirus disease 2019 pandemic has impacted the accuracy and the completeness of this year's private sector hospital expenditure and activity. As a result this year may not be consistent with prior years and across jurisdictions.

The NHCDC Private Hospital Report contains detailed summary tables of all reported figures.

Reporting Period: 1 July 2021 to 30 June 2022 | AR-DRG Version 11.0 | AN-SNAP Version 5.0



*Total number of overnight hospitals reporting to Private Hospital Data Bureau (PHDB) was 284

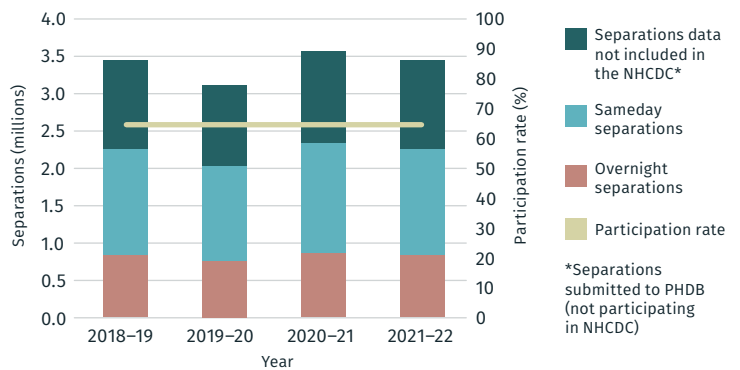
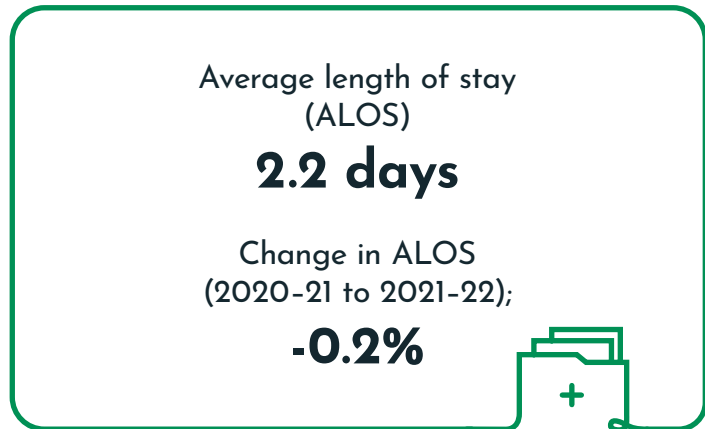


Figure 1: Comparison of types of separation over a 4-year period

Breakdown of costs by cost bucket group

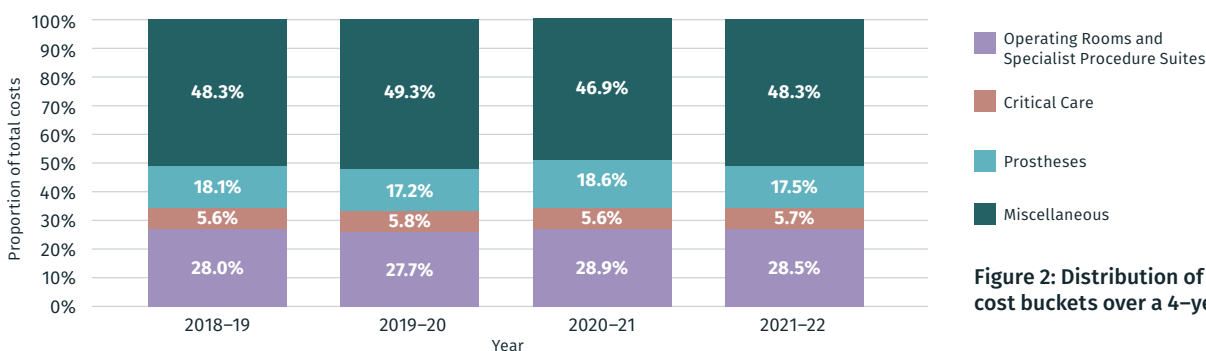


Figure 2: Distribution of costs across the four cost buckets over a 4-year period

MDC: Top 5 Cost Weighted Separations

Rank	MDC	MDC Description	Cost weight	No. of weighted seps	Cost weighted seps	ALOS
1	08	Diseases and Disorders of the Musculoskeletal System and Connective Tissue	2.01	468,580	941,846	2.9
2	05	Diseases and Disorders of the Circulatory System	2.26	220,289	497,853	3.4
3	06	Diseases and Disorders of the Digestive System	0.60	578,576	347,146	1.7
4	14	Pregnancy, Childbirth and the Puerperium	1.46	116,676	170,347	3.6
5	09	Diseases and Disorders of the Skin, Subcutaneous Tissue and Breast	1.00	157,199	157,199	2.2

Top 5 AR-DRGs by Volume

Highest Volume of Population-Adjusted Separations

AR-DRGs with the highest number of population-adjusted weighted separations (most common separations)

Rank	AR-DRG	AR-DRG Description	2020-21		2021-22		
			Cost weighted seps	No. of weighted seps	ALOS	Cost weighted seps	No. of weighted seps
1	R63Z	Pharmacotherapy for Neoplastic Disorders	55,054	275,269	1.0	63,838	290,171
2	G48B	Colonoscopy, Minor Complexity	51,522	171,739	1.0	51,917	162,242
3	L61Z	Haemodialysis	15,476	140,690	1.0	15,201	152,009
4	G46B	Complex Endoscopy, Minor Complexity	43,133	123,236	1.1	43,417	120,602
5	G47C	Gastroscopy, Minor Complexity	19,236	87,435	1.1	20,490	85,373

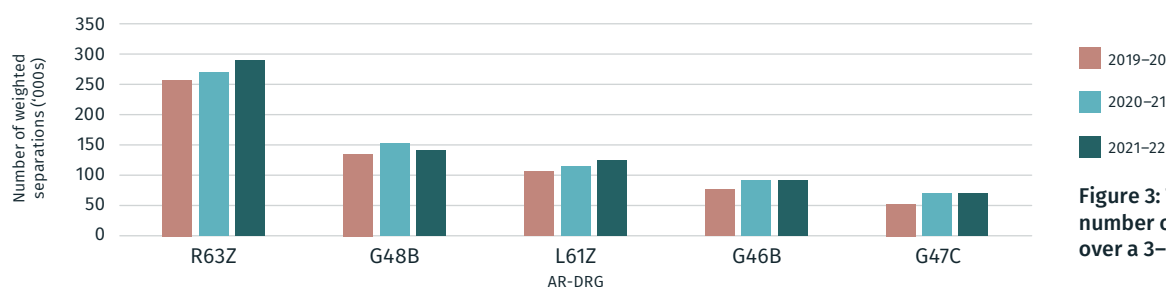


Figure 3: Top 5 AR-DRGs based on number of weighted separations over a 3-year period

Highest Cost Weighted Separations

AR-DRGs where separations had highest collective cost (high volume separations with high cost)

Rank	AR-DRG	AR-DRG Description	2020-21		2021-22		
			Cost weighted seps	No. of weighted seps	ALOS	Cost weighted seps	No. of weighted seps
1	I04B	Knee Replacement, Minor Complexity	157,665	41,821	4.3	138,198	37,759
2	I33B	Hip Replacement for Non-Trauma, Minor Complexity	123,929	29,648	4.0	116,729	28,610
3	R63Z	Pharmacotherapy for Neoplastic Disorders	55,054	275,269	1.0	63,838	290,171
4	I09C	Spinal Fusion, Minor Complexity	68,552	10,728	4.7	62,118	9,966
5	O01C	Caesarean Delivery, Minor Complexity	54,050	27,718	4.3	60,978	30,489

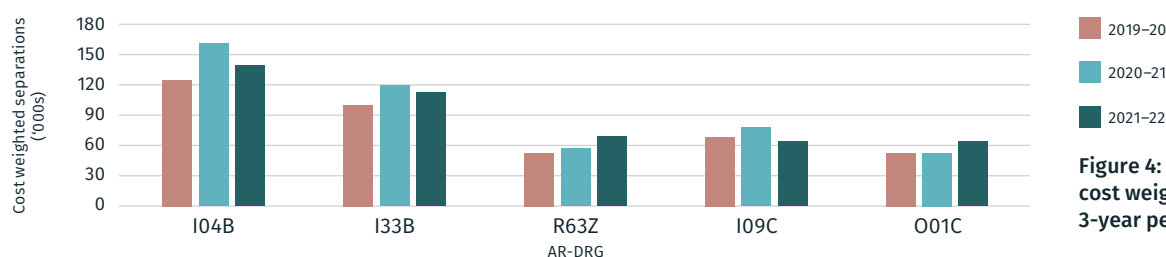


Figure 4: Top 5 AR-DRGs based on cost weighted separations over a 3-year period

Further information

To learn more about the Independent Health and Aged Care Pricing Authority, get in touch with us via the details below.

(02) 8215 1100 enquiries.ihacpa@ihacpa.gov.au www.ihacpa.gov.au

Find us online



Independent Health and Aged Care Pricing Authority