

# **Australian Teaching and Training Classification**

**Grouper Application v1.1**

**User Guide**

**March 2021**

## Australian Teaching and Training Classification – Grouper Application v1.1 – User Guide

© Independent Hospital Pricing Authority 2021

This publication is available for your use under a [Creative Commons BY Attribution 3.0 Australia](#) licence, with the exception of the Independent Hospital Pricing Authority logo, photographs, images, signatures and where otherwise stated. The full licence terms are available from [the Creative Commons website](#).



Use of Independent Hospital Pricing Authority material under a [Creative Commons BY Attribution 3.0 Australia](#) licence requires you to attribute the work (but not in any way that suggests that the Independent Hospital Pricing Authority endorses you or your use of the work).

*Independent Hospital Pricing Authority material used 'as supplied'.*

Provided you have not modified or transformed Independent Hospital Pricing Authority material in any way including, for example, by changing Independent Hospital Pricing Authority text – then the Independent Hospital Pricing Authority prefers the following attribution:

*Source: The Independent Hospital Pricing Authority*

## Table of Contents

Introduction.....	3
Contact us .....	3
Input data specifications .....	4
Output data specifications .....	10
How to group an input file .....	11
Appendix 1 – List of ATTC V1 end class codes and descriptions.....	15

## Introduction

The Australian Teaching and Training Classification grouper application V1.1 has been developed by Independent Hospital Pricing Authority (IHPA) to assist state and territory health departments and hospitals to group hospital teaching and training data to the ATTC V1 classification system.

This user guide provides details of the ATTC grouper application, including the input and output data specifications, and a step by step guide to group data.

This application provides the ability to group file in .csv format interactively. The grouping results are output as a CSV file and can also be viewed in the application.

Appendix 1 lists the ATTC end class codes and descriptions. This list can be used to label the grouper output values.

## Contact us

For more information, contact:

ABF Data Acquisition Section  
Independent Hospital Pricing Authority  
Level 6, 1 Oxford Street  
DARLINGHURST NSW 2010

Phone: (02) 8215 1130

Fax: (02) 8215 1111

## Input data specifications

The input file for the grouper application is required to be in CSV (ie. comma delimited) format. Its content should only contain data, without header line.

There are three input fields: **ID**, **Area of clinical focus** and **Training Stage** in order.

The ordering of these fields in the input CSV file is crucial to the accurate grouping of records by the application. All fields must be included in the input CSV file. Records with missing or invalid field values are allowed but may lead to the record being grouped to an “unknown” type or “ungroupable” end class (see *Output Fields* section for further details).

The required field ordering of the input CSV file is:

Field Name	Field Number
ID	1
Area of clinical focus	2
Training Stage	3

An **ID** serves as a unique record number for each input row (serving as a linking key), which can link to a full record from a teaching and training database.

The valid values for **Area of clinical focus** field are **Professions** from Area of clinical focus, version 2, which is listed as below:

Code	Health professional group	Specialisation of health professional group (NNN) (Student/pre-entry trainee and new graduate)	Sub-specialisation area of clinical focus (.NNN) (Postgraduate/vocational student)
100.000	1 Allied Health	100.000 Allied health, unspecified	
101.000		101.000 Aboriginal and Torres Strait Islander health worker <i>Includes:</i> - Aboriginal and Torres Strait Islander Health Practitioner - Aboriginal Health Practitioner - Torres Strait Islander Health Practitioner	
102.000		102.000 Audiology	
103.000		103.000 Chiropractic	
104.000		104.000 Dietetics <i>Includes:</i> - Nutritionist	
105.000		105.000 Exercise physiology	
106.000		106.000 Medical laboratory science	
107.000		107.000 Occupational therapy	

Code	Health professional group	Specialisation of health professional group (NNN) (Student/pre-entry trainee and new graduate)	Sub-specialisation area of clinical focus (.NNN) (Postgraduate/vocational student)
108.000		108.000 Optometry <i>Includes:</i> - Optician	
110.000		110.000 Orthoptics	
111.000		111.000 Orthotics and prosthetics	
112.000		112.000 Osteopathy	
113.000		113.000 Paramedicine	
114.000		114.000 Pharmacy <i>Includes:</i> - Pharmaceutical chemist	
115.000		115.000 Physiotherapy <i>Includes:</i> - Physical therapist	
116.000		116.000 Podiatry <i>Includes:</i> - Podiatrist - Chiropodist	
117.000		117.000 Psychology	
118.001		118.001 Radiation science – radiography <i>Includes:</i> - Diagnostic radiographer - Radiographer - Medical imaging technologist	
118.002		118.002 Radiation science – nuclear medicine* <i>Includes:</i> - Nuclear medicine scientist - Nuclear medicine technologist	
118.003		118.003 Radiation science – radiation therapy <i>Includes:</i> - Medical radiation practitioner - Radiation therapist	
119.000		119.000 Social work	
120.000		120.000 Sonography	
121.000		121.000 Speech pathology <i>Includes:</i> - Speech therapist	
199.000		199.000 Other allied health type <i>Includes:</i>	

Code	Health professional group	Specialisation of health professional group (NNN) (Student/pre-entry trainee and new graduate)	Sub-specialisation area of clinical focus (.NNN) (Postgraduate/vocational student)
		- Clinical measurement	
200.000	2-Dental Practitioner	200.000 Dentist, unspecified	
200.001			200.001 Dento-maxillofacial radiology
200.002			200.002 Endodontics
200.003			200.003 Forensic odontology
200.004			200.004 Oral and maxillofacial surgery
200.005			200.005 Oral medicine
200.006			200.006 Oral and maxillofacial pathology
200.007			200.007 Oral surgery
200.008			200.008 Orthodontics
200.009			200.009 Paediatric dentistry
200.010			200.010 Periodontics
200.011			200.011 Prosthodontics
200.012			200.012 Public health dentistry (community dentistry)
200.013			200.013 Special needs dentistry
200.099			200.099 Other postgraduate Dentistry
201.000		Dental practitioner, other <i>Includes:</i> - Dental therapist - Dental hygienist - Dental prosthetist - Oral health therapist	
300.000	3-Medicine	300.000 Medicine, unspecified	
300.001			300.001 Addiction medicine
300.002			300.002 Anaesthesia
300.003			300.003 Cardiology
300.004			300.004 Dermatology
300.005			300.005 Emergency medicine
300.006			300.006 Endocrinology
300.007			300.007 Gastroenterology and hepatology
300.008			300.008 General medicine
300.009			300.009 General practice

Code	Health professional group	Specialisation of health professional group (NNN) (Student/pre-entry trainee and new graduate)	Sub-specialisation area of clinical focus (.NNN) (Postgraduate/vocational student)
300.010			300.010 Geriatric medicine
300.011			300.011 Intensive care medicine
300.012			300.012 Medical administration
300.013			300.013 Medical oncology <i>Includes:</i> - Oncologist
300.014			300.014 Nephrology
300.015			300.015 Neurology
300.016			300.016 Obstetrics and gynaecology
300.017			300.017 Occupational and environmental medicine
300.018			300.018 Ophthalmology
300.019			300.019 Paediatrics and child health <i>Includes:</i> - Neonatology
300.020			300.020 Pain medicine
300.021			300.021 Palliative medicine
300.022			300.022 Pathology
300.023			300.023 Psychiatry
300.024			300.024 Public health medicine
300.025			300.025 Radiation oncology
300.026			300.026 Radiology
300.027			300.027 Rehabilitation medicine
300.028			300.028 Sexual health medicine
300.029			300.029 Sport and exercise medicine
300.030			300.040 Clinical genetics
300.031			300.031 Clinical pharmacology
300.032			300.032 Haematology
300.033			300.033 Immunology and allergy
300.034			300.034 Infectious diseases
300.035			300.035 Nuclear medicine
300.036			300.036 Respiratory and sleep medicine
300.037			300.037 Rheumatology
300.099			300.099 Medicine, other postgraduate
300.300			300.300 Surgery, unspecified



Code	Health professional group	Specialisation of health professional group (NNN) (Student/pre-entry trainee and new graduate)	Sub-specialisation area of clinical focus (.NNN) (Postgraduate/vocational student)
300.301			300.301 Surgery – general
300.302			300.302 Surgery – orthopaedic
300.303			300.303 Surgery – otolaryngology head and neck
300.304			300.304 Surgery – plastic and reconstructive
300.305			300.305 Surgery – cardiothoracic
300.306			300.306 Surgery – neurosurgery
300.307			300.307 Surgery – oral and maxillofacial surgery
300.308			300.308 Surgery – paediatric
300.309			300.309 Surgery – urology
300.310			300.310 Surgery – vascular
300.399			300.399 Surgery – other surgery type
400.000	4-Midwifery	400.000 Midwifery, unspecified	
400.001			400.001 Midwifery – midwife practitioner
400.099			400.099 Other postgraduate Midwifery
500.000	5-Nursing	500.000 Nursing, unspecified	
501.000		501.000 Nursing – registered nurse	
501.001			501.001 Registered nurse – nurse practitioner
501.002			501.002 Registered nurse – aged care <i>Includes:</i> - Gerontology
501.003			501.003 Registered nurse – child and family health
501.004			501.004 Registered nurse – community health
501.005			501.005 Registered nurse – critical care and emergency <i>Includes:</i> - Acute care - Emergency/trauma - High dependency - Neonatal intensive care - Paediatric intensive care
501.006			501.006 Registered nurse –

Code	Health professional group	Specialisation of health professional group (NNN) (Student/pre-entry trainee and new graduate)	Sub-specialisation area of clinical focus (.NNN) (Postgraduate/vocational student)
			developmental disability
501.007			501.007 Registered nurse – disability and rehabilitation <i>Includes:</i> - Rehabilitation
501.008			501.008 Registered nurse – medical
501.009			501.009 Registered nurse – medical practice
501.010			501.010 Registered nurse – mental health <i>Includes:</i> - Child and adolescence mental health - Drug and alcohol - Psychiatric rehabilitation - Psychogeriatric care
501.011			501.011 Registered nurse – perioperative <i>Includes:</i> - Anaesthetic - Operating room - Recovery
501.012			501.012 Registered nurse – surgical
501.099			501.099 Registered nurse - other postgraduate
502.000		502.000 Nursing – enrolled nurse	
599.000		599.000 Nursing – other nursing profession	

The valid values for the **Training stage** field are:

Value	Description
1	Student / pre-entry trainee
2	New graduate
3	Postgraduate / vocational student
9	Not stated / inadequately described

The application groups all records of the CSV file from row 1. In particular, no header row is expected. However, if a header row is present, the application will still group all records, including the header row which will receive an error (ie. ungroupable) end class.

## Output data specifications

Once an input CSV file has been selected and submitted within the application, the application outputs a CSV file in the same location as the input CSV file. The name of the output CSV file is the name of the input CSV file with “\_grouped” appended. For example, if the input CSV file is named “Sample\_input\_data.csv”, then the output file will be named “Sample\_input\_data\_grouped.csv”.

If a file with the same name as the output file already exists in the output location, then the existing file will be overwritten with the new output file. However, if there is a lock on the existing file (e.g. the file is open), then no file will be output by the application.

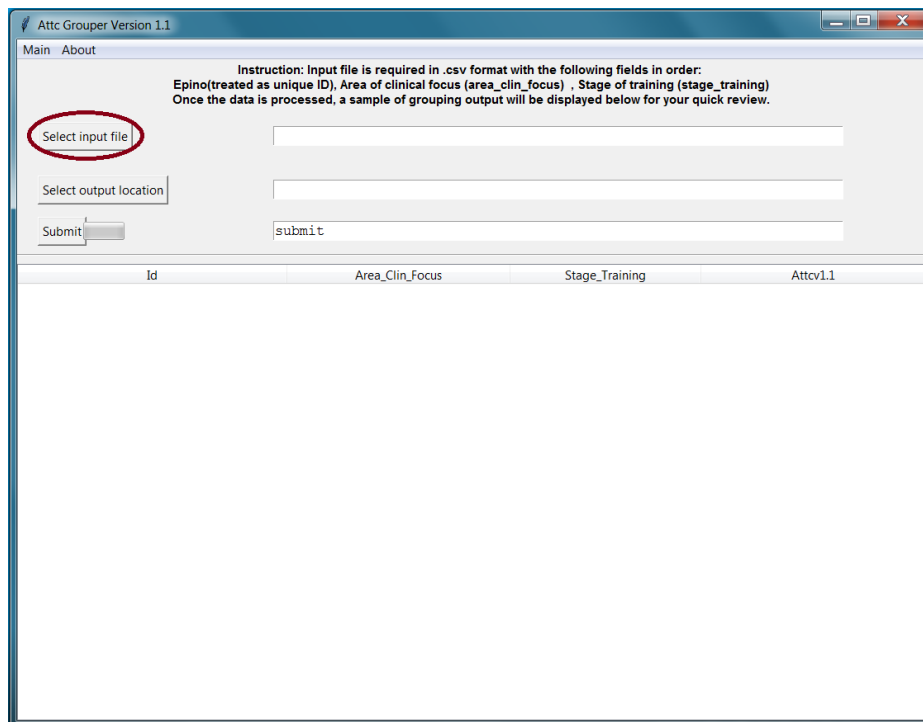
The output CSV file contains an identical copy of the input CSV file, together with an ATTC V1.1 end class field. Within the output CSV file, grouping result - ATTC V1 end class is appended to the end of the 3 input fields, as field number 4.

The ATTC V1 End Class output field values are listed in Appendix 1. All input records receive an ATTC end class value. All input records with valid Area of clinical focus receive a non-error ATTC V1 end class code; records with invalid or missing Area of clinical focus are assigned the “ungroupable” error end class code “Error”.

## How to group an input file

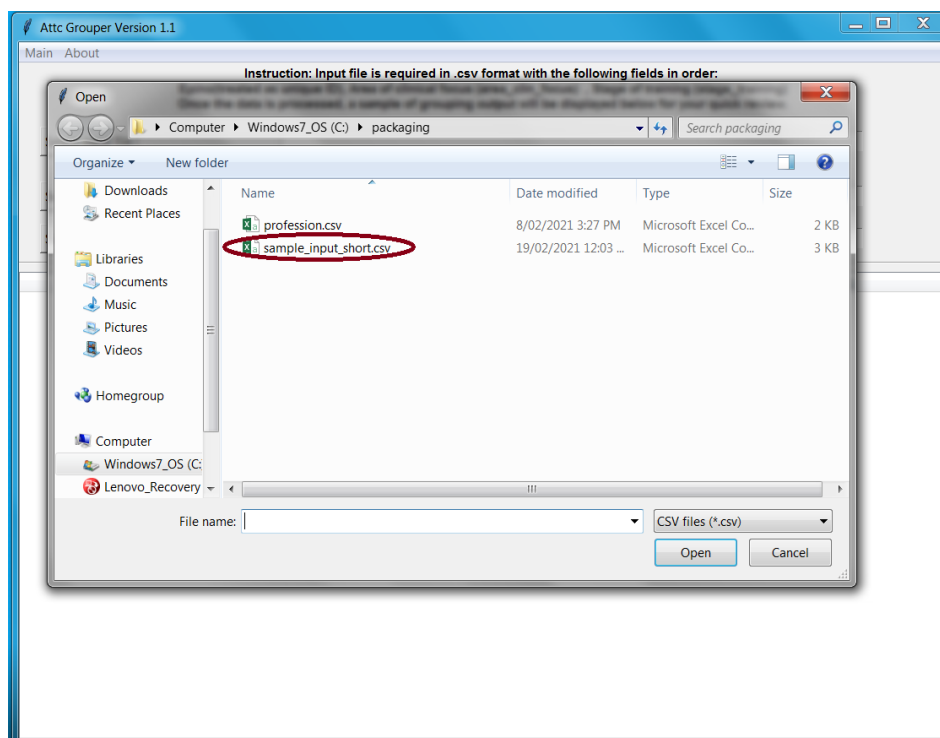
1. Open **attcv1\_1.exe** and click the “**Select input file**” button to select the input file to be grouped.

Figure 1. ATTC Grouper Main Window



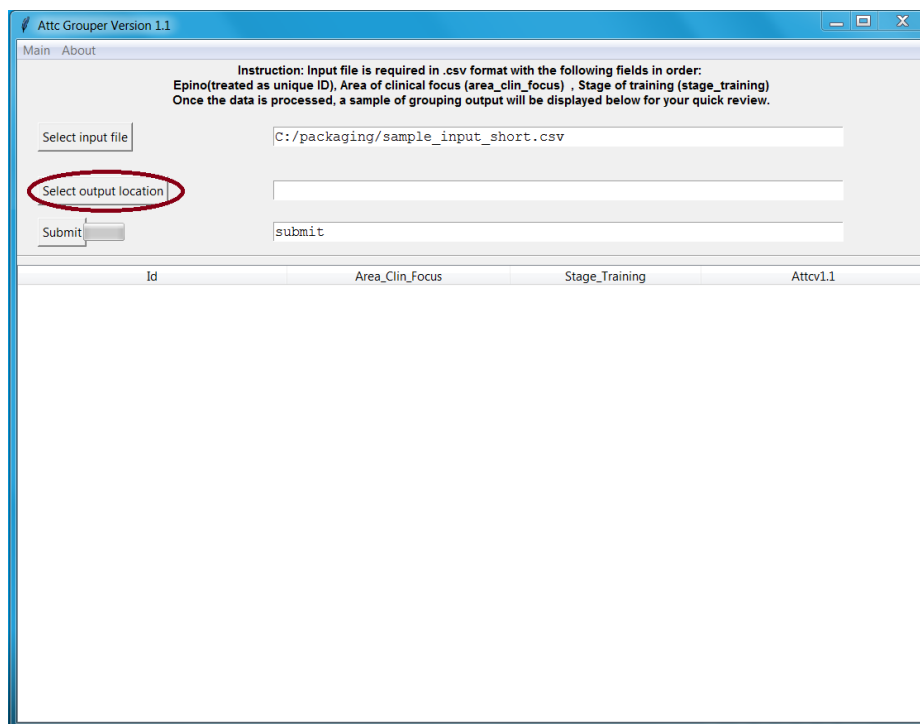
2. **Specify** the input CSV file to be grouped in the input file. Click “**Open**” to select it.

Figure 2. Selecting Data to be grouped



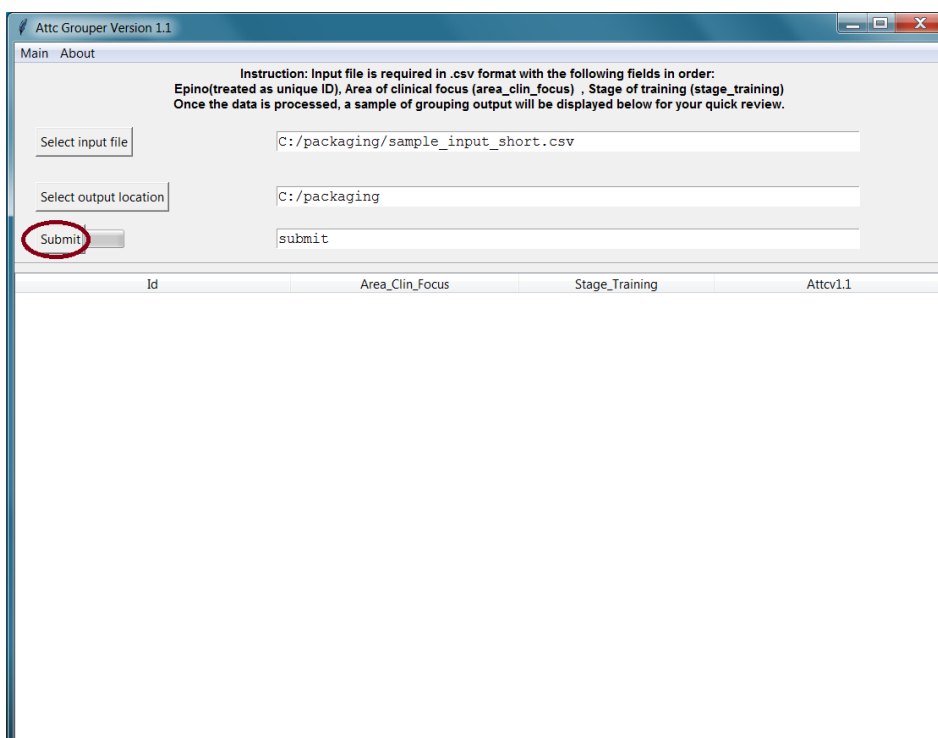
3. By default, the grouper outputs to the same folder of the input file. To output a different folder, click the “**Select Output file**” button.

Figure 3. Selecting output folder



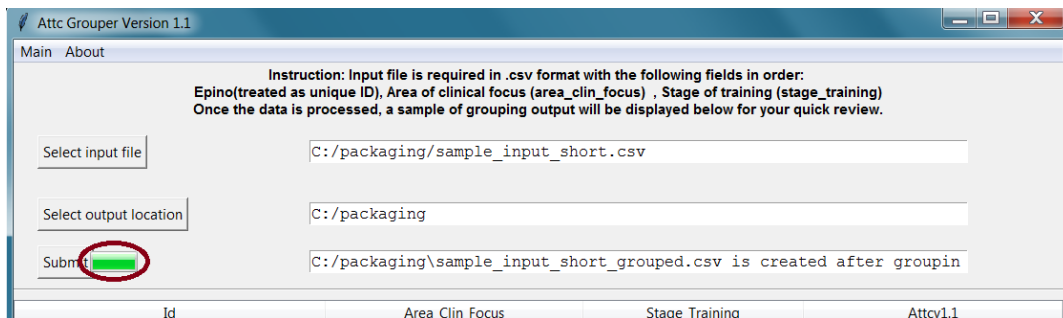
4. Click the “**Submit**” button, then the application starts grouping data.

Figure 4. Submitting Data to be grouped



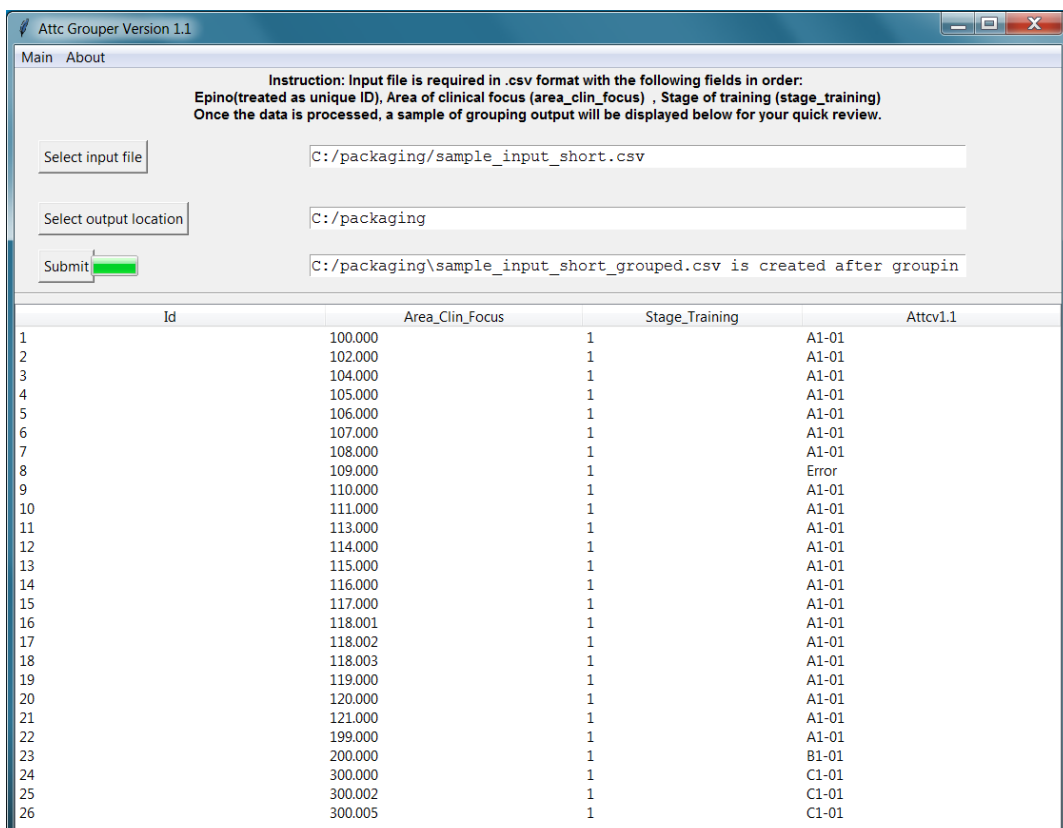
During the running time, a status bar demonstrates the progress of grouping in green, as shown in Figure 5.

**Figure 5.** Status bar for showing grouping progress



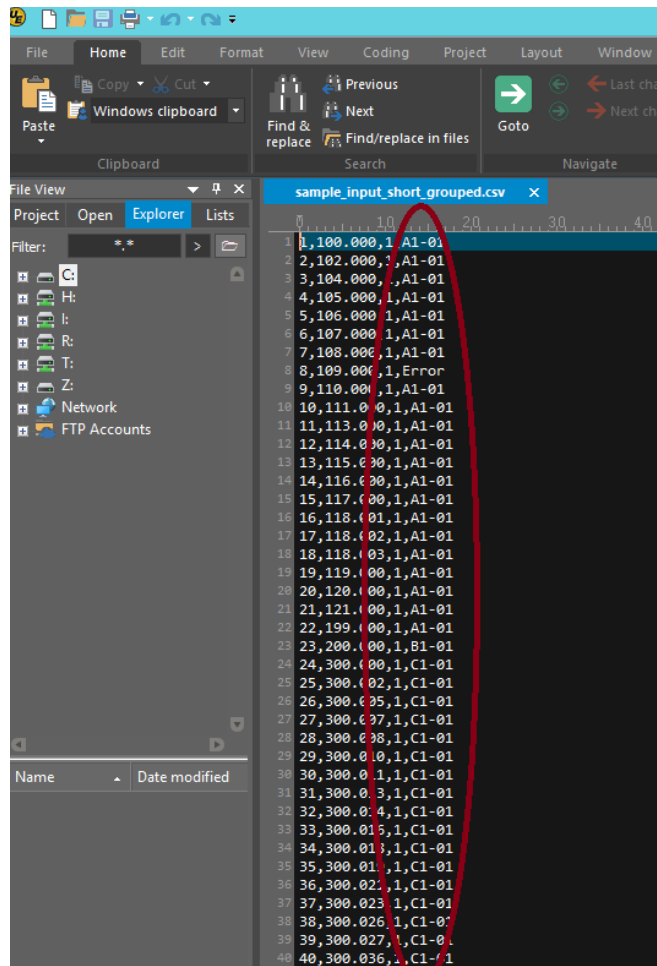
- When the grouping is completed, an output message will show the result of processing (whether successful or failed) beside the “Submit” button on the right-hand side. In the bottom of this window, it shows the first 2,000 grouped records.

**Figure 6.** Grouper output preview.



6. After grouping, in the same folder of input file by default, a new CSV file named with original name+“\_grouped.csv” is created. The output CSV file contains the original input data together with grouper output column - ATTC V1 End Class appended at the end.

Figure 7. Grouper output .csv file.



## Appendix 1 – List of ATTC V1 end class codes and descriptions

ATTC end-class	Profession	Training stage
A1-01	Allied health	Student / pre-entry trainee
A2-01	Allied health	New graduate
A3-01	Allied health	Postgraduate / vocational student
A4-01	Allied health	Unknown stage of training
B1-01	Dentistry	Student / pre-entry trainee
B2-01	Dentistry	New graduate
B3-01	Dentistry	Postgraduate / vocational student
B4-01	Dentistry	Unknown stage of training
C1-01	Medicine	Student / pre-entry trainee
C2-01	Medicine	New graduate
C3-01	Medicine	Postgraduate / vocational student
C4-01	Medicine	Unknown stage of training
D1-01	Midwifery	Student / pre-entry trainee
D2-01	Midwifery	New graduate
D3-01	Midwifery	Postgraduate / vocational student
D4-01	Midwifery	Unknown stage of training
E1-01	Nursing	Student / pre-entry trainee
E2-01	Nursing	New graduate
E3-01	Nursing	Postgraduate / vocational student
E4-01	Nursing	Unknown stage of training